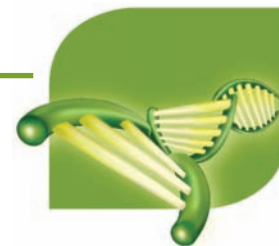


# Hematoxylin

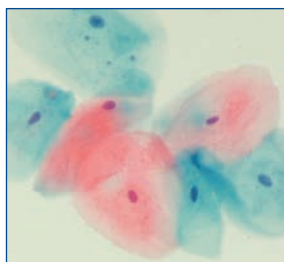


Our Hematoxylin products offer you the highest quality for routine staining. Strict quality control for all Gold Standard Series Routine Stains ensures lot-to-lot consistency.

## Gold Standard Series Gill's Hematoxylin

### Gill's Hematoxylin #1 for Cytology

Gill's #1 is ideal for routine cytology staining. This single strength formulation optimally stains gynecological and non-gynecological specimens.



*Cheek cells, Gill's #1, 20x*

Catalog #	Size
24242-500	500ml
24242-1000	1000ml

### Gill's modified EA & Gill's modified OG-6

Orange-6 and EA are the two cytoplasmic counterstain solutions that are used sequentially in the Papanicolaou staining method for clinical cytology. Gill's modified EA and OG-6 are stable in solution and give predictable high quality staining results not previously possible with other formulations.

#### Gill's modified EA

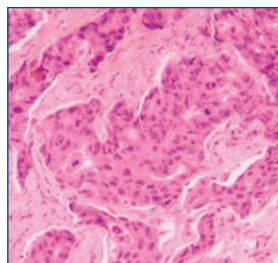
Catalog #	Size
09783-500	500ml
09783-1000	1000ml
09783-3.75	3.75 liters

#### Gill's modified OG-6

Catalog #	Size
09782-500	500ml
09782-1000	1000ml
09782-3.75	3.75 liters

### Gill's Hematoxylin #2, double strength for Histology & Cytology

Gill's #2 should be used when a stronger or darker nuclear stain is required for cytology samples or for immunohistochemical counterstaining.

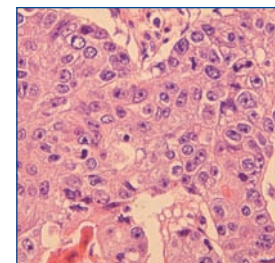


*Breast, Gill's #2, 10x*

Catalog #	Size
24243-500	500ml
24243-1000	1000ml

### Harris Hematoxylin, Acidified (mercury-free)

Gold Standard Harris Hematoxylin for routine histology and cytology. Similar results can be achieved to those of Gill's Hematoxylin #1, #2, and #3 formulations by varying staining times.

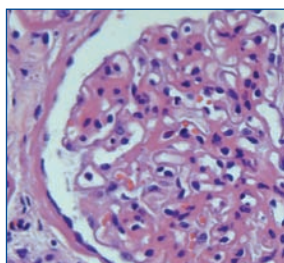


*Colon carcinoma, Harris, 20x*

Catalog #	Size
24245-500	500ml
24245-1000	1000ml

### Gill's Hematoxylin #3, triple strength for Histology

Gill's #3 is the formulation of choice for routine histological staining when a darker nuclear stain is desired.

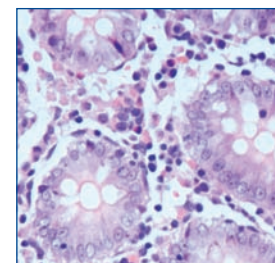


*Kidney, Gill's #3, 20x*

Catalog #	Size
24244-500	500ml
24244-1000	1000ml

### Mayers Hematoxylin

For use in both cytology and histology. General purpose nuclear stain, used with hematoxylin and eosin staining. Use as a counterstain for immunohistochemistry procedures.



*Colon, Mayers, 20x*

Catalog #	Size
24821-500	500ml
24821-1	1 liter