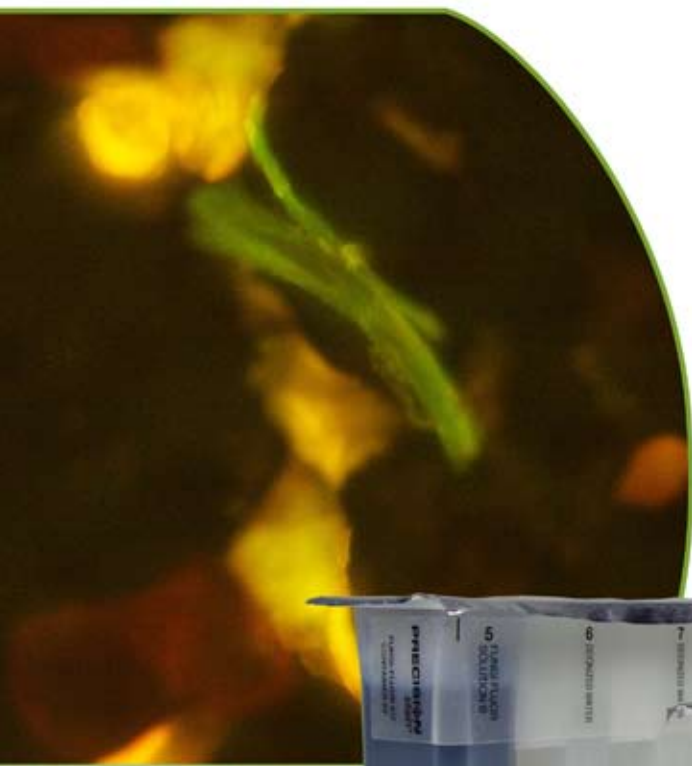


Fungi-Fluor® Precision Stain Kit



Advantages

- **Accurate Diagnosis** - more accurate than KOH preps
- **Faster Diagnosis** - more rapid than PAS or GMS stains
- **Convenient** - self-contained for neat and easy staining
- Stains *Pneumocystis (carinii) jiroveci* cysts unlike other fluorescent reagents
- Will not interfere with subsequent PAS or GMS stains
- Stable for several months when stained specimens are sealed with Poly-Mount (Cat. #: 08381)
- Counterstain minimizes background fluorescence



Cat. #: 25072



For Detecting Fungal & Bacterial Elements by Fluorescence Microscopy

New Fungi-Fluor® Precision Stain Kit - offers a neat, self-contained, ready-to-use format for the rapid identification of various fungal infections in fresh or frozen clinical specimens of paraffin or glycol methacrylate embedded tissue. Typical specimens include sputum, bronchoalveolar lavage (BAL), bronchial wash and tissue biopsies.

Various fungal and yeast types will stain fluorescently including: *Candida sp.*, *Histoplasma sp.* and *Aspergillus sp.* among others. **Fungi-Fluor® will also stain *Pneumocystis (carinii) jiroveci* cysts**, parasites such as *Plasmodium sp.* and regions of fungal hyphae undergoing differentiation. Keratin, collagen and elastin fibers are also stained and may provide structural guidelines for diagnosis.